



PlanIT GeoTM

developers of TreePlotter

COMPLETE URBAN
FORESTRY SOLUTIONS

PlanIT GeoTM

government | private | nonprofit | campus



TreePlotter SOFTWARE SUITE

TreePlotter is a best in class software suite made up of four applications. All of our software is map-centric and web-based, allowing access via any internet device and real-time data updates. Our platform allows API and WFS integrations, so you can use TreePlotter as a stand-alone system or integrate with existing technology.

The common thread of our software is high-powered functionality in an easy-to-use format. Save you and your staff time and money with increased efficiency, better communication, and smarter, data-driven decision-making.

Get to Know PLANIT GEO

PlanIT Geo™ is a global software and consulting company providing innovative planning and technology for urban forestry, parks, and arboriculture. Since 2012, our team of ISA Certified Arborists, GIS professionals, planners, and software developers have led hundreds of projects, including urban tree canopy assessments, field-based tree inventories, and strategic plan development. Our TreePlotter™ software is often integrated with our consulting services and is used by thousands of urban foresters, arborists, park managers, and tree care companies around the world.

We see our purpose as adding “technology capacity” through data, information, and tools to any organization that wants to measure, manage, and protect green assets. Whether you represent a large city, a small tree care company, a corporate or university campus, or a nonprofit organization, we’ve got you covered.



Collect and manage tree data in real-time, anywhere, on any device



Grow your tree care business with online proposals, tree maps, and job scheduling



Map and inspect green assets and streamline work order management



View, plan, and grow your urban forest with canopy data analysis tools

TreePlotter INVENTORY

Great for local and state governments, consulting arborists, nonprofits, and corporate and university campuses

Our flagship product, TreePlotter INVENTORY, is a comprehensive tree inventory and management software. It's a flexible tool for capturing tree and asset information in the field and managing that data with configurable dashboards, analysis, and reports. This web-based application allows for a quick rollout, with no additional device purchases necessary. Your unlimited users can use any smartphone or tablet to locate assets, assess conditions, store photos, and report findings in real-time.

Proactively manage risk and bolster outreach with complete work histories, public-facing maps, and customizable user access roles. Use the scalable product levels and industry specific functionalities to find the perfect fit for your organization.



MANAGE FROM ANYWHERE

Add, view, and update data from any location



DATA VISUALIZATION

Tell a powerful story with shareable, interactive maps



MOBILE

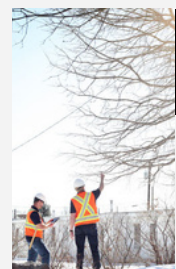
No GPS required, use on any device



5 STAR SUPPORT

A support team with a proven record of excellence

Industry Specific FUNCTIONALITIES



Work Order Management

A centralized system for bids, work orders, service requests, and invoices



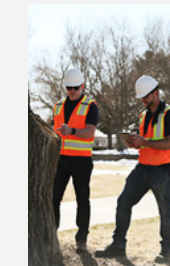
Eco Benefits

Globally supported i-Tree monetary and ecological benefits for every tree



QTRA (UK and AU)

Electronic calculator for Quantified Tree Risk Assessment



Advanced Risk Assessment

Electronic Level 2 ISA Advanced Risk Assessment form



Development Survey (UK)

Meet BS5837 standards for tree protection during construction



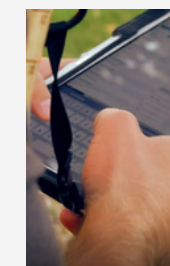
Reference Layer Importer

Add SHP or CAD files to view as a layer on your map



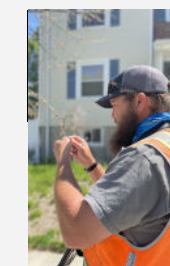
API and WFS Integrations

Integrate with an existing technology stack



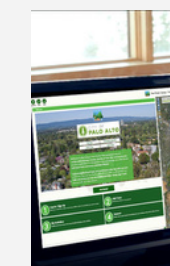
Offline Collector

Collect data with limited to no service in the field



Tree Appraisal

Efficiently calculate and report appraised tree value



Custom Landing Page

A unique landing page to inform and engage your audience

TreePlotter SOFTWARE

TreePlotter CANOPY



Visualize tree canopy and land cover data with TreePlotter CANOPY. Make data-driven decisions by identifying areas with low canopy and high planting potential. With CANOPY you can fine-tune your priorities based on a range of metrics, evaluate canopy goals, and measure projected impacts on ecosystem benefits.

Great for local, county, and state governments, and nonprofits

TreePlotter JOBS



Get everyone on the same map with TreePlotter JOBS, our application designed specifically for tree care companies. Stand out from the competition with powerful features for mapping trees, creating modern, interactive estimates, and scheduling work orders. Provide clients with online access to view and approve professional, electronic proposals and get field crews and office staff on the same page with real time progress updates.

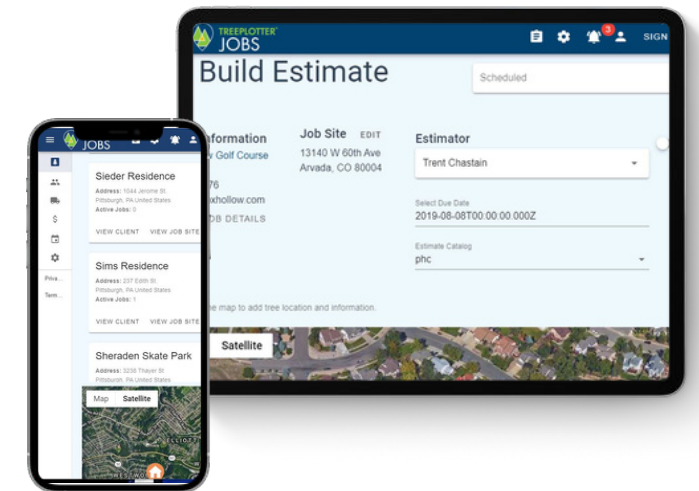
Great for tree care companies

CANOPY DATA SUBSCRIPTIONS

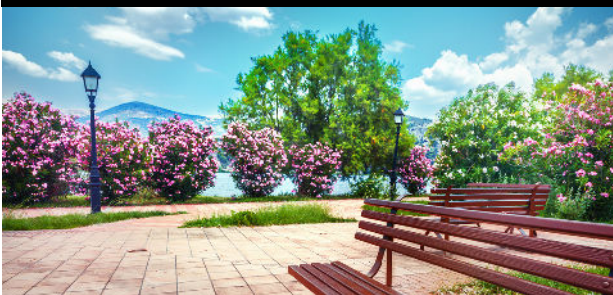
High-resolution, frequently updated tree canopy data is now accessible to communities of all sizes. For a low annual cost, communities can keep a precise pulse on their urban forest with 60-cm resolution land cover data that is updated every other year.

To launch this revolutionary model, we partnered with EarthDefine™. EarthDefine uses artificial intelligence and machine learning to transform earth sensor data into the most detailed U.S. tree canopy data available. Subscriptions can include data only or data + TreePlotter CANOPY.

Clients may not understand the full arboricultural value of your company's recommendations but they can easily gauge the quality of service being provided. JOBS helps your company leave a lasting impression so you win more bids.



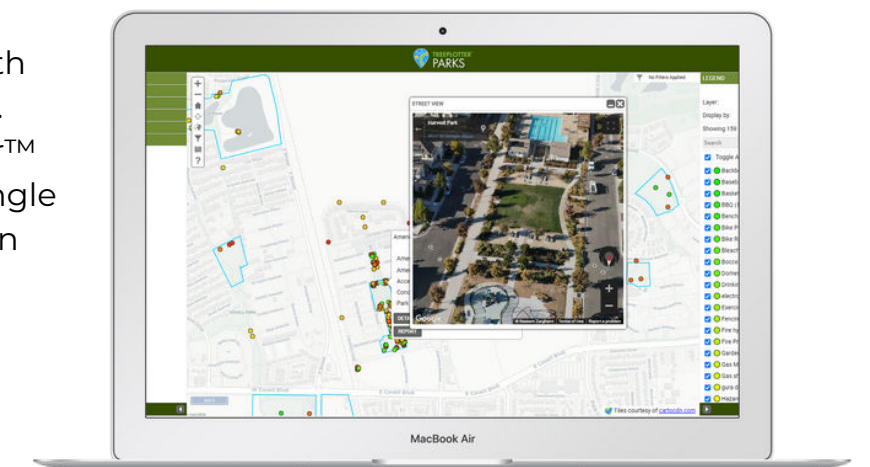
TreePlotter PARKS



Build a clear picture of your green assets faster than ever before! PARKS is a GIS-based, all-in-one software that gives you instant access to your tree, park, and grounds maintenance data. Map and document equipment and facilities with customizable data fields and dropdown menus for park boundaries, playgrounds, irrigation, and more.

Great for park departments, campuses, and enterprise clients

Manage assets, costs, and maintenance schedules with powerful visualization tools. PARKS includes TreePlotter™ INVENTORY, providing a single system for any type of urban green assets.



Tree Inventory AND ASSESSMENTS



PlanIT Geo is a leader in GIS-based tree inventories, tree data management, risk assessments, maintenance recommendations, valuations, and mitigation reports. Since 2012, our team of ISA Certified Arborists have inventoried over one million trees across 30 states and territories, for clients ranging from small homeowners associations to massive county-wide data sets.

In addition to data delivery, we can provide insights on suitable planting opportunities designed around your budget and planning priorities. Our team also offers guidance, suggestions, and best management practices so your tree data effectively integrates with your operations.

PROVEN OUTCOMES

- Prioritize removals and maintenance
- Obtain vital species diversity and composition statistics
- Calculate ecosystem benefits of trees
- Track work records and historical site data
- Relay valuable tree information to the public

INNOVATIVE DATA COLLECTION



EFFICIENT

By using our own TreePlotter software our team can collect data fast. This ensures projects are completed on time and on budget.



CUSTOMIZABLE

All clients and projects are unique. We tailor data fields, attributes, and local area imagery to meet your budget and specific needs.



ACCURATE

All inventory locations and attributes pass stringent quality assurance procedures.

Geospatial MAPPING SERVICES



It's always better to work with the full picture. Our Geospatial Mapping team can create a comprehensive view of your urban forest with leading-edge urban tree canopy assessments, green infrastructure mapping, and web-mapping applications. We provide personalized services to communities of all sizes, including federal, state, and local government organizations, nonprofits, and even private landowners.

OUR PROCESS



High-resolution aerial and satellite imagery, LiDAR, and other geospatial data sets are used to create detailed land cover data.

From that data, we derive urban tree canopy, green/gray infrastructure, and possible planting areas at a range of geographic scales.

Canopy cover is layered with environmental, socioeconomic, and demographic indicators to identify priority planting areas.

The complex geospatial information is transformed into visual products, including reports, fact sheets, and interactive websites, to tell a powerful story to the public and city leadership.

PROVEN OUTCOMES

- Empower urban forest managers and planners with an expanded understanding of their urban forest, including present, past, and future conditions
- Guide tree planting, policy, management forecasting, and outreach
- Expand stewardship of the urban tree canopy with clear knowledge of the value it provides
- Support land use and development planning for tree protection, open space, habitat, and ecological restoration

Urban Forestry CONSULTING SERVICES



PlanIT Geo's Consulting Services help programs define a vision for the future of their urban forest and establish the actions, goals, policies, and metrics needed to get there. As consultants for dozens of urban forest plans for cities, counties, and nonprofits, we have a proven planning framework for developing actionable, working documents that ensure management decisions made today build towards beneficial and equitable outcomes for decades to come. We develop recommendations mindful of local resources, climate, and economic constraints and utilize a range of proven industry tools.

TOOLS TO MAKE IT HAPPEN

-  Urban Forest Sustainability Checklists and Audits
-  Measurements and Milestones
-  Stakeholder Engagement Exercises
-  Urban Forest Criteria and Performance Indicators
-  Implementation Plans and Financial Strategies
-  SWOT Analysis

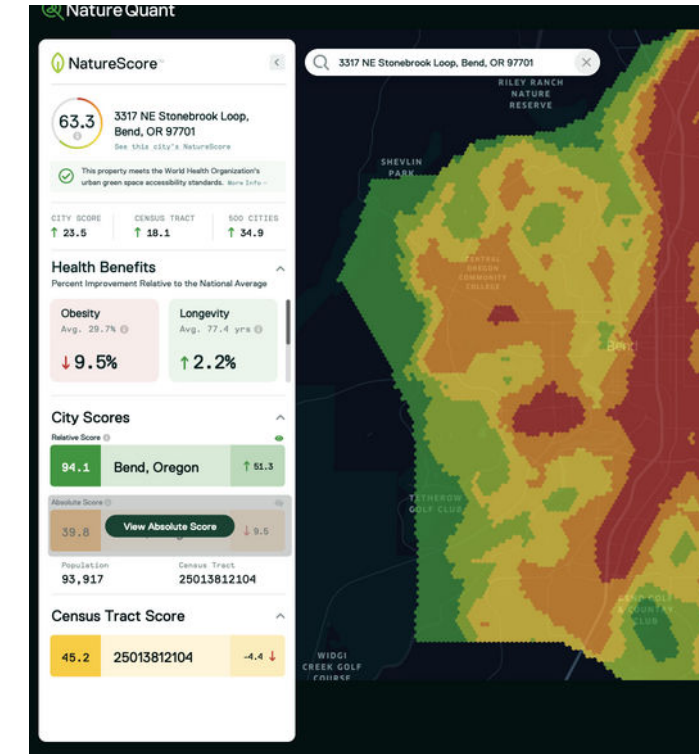
PROVEN OUTCOMES

- URBAN FOREST MANAGEMENT AND MASTER PLANS
- CANOPY ACTION PLANS
- OPERATIONAL AND WORK PLANNING
- PLANTING PLANS AND DESIGNS
- i-TREE STUDIES
- ORDINANCE AND POLICY REVIEW AND REWRITES

PlanIT Geo WORLDWIDE

PARTNERSHIPS

To deliver more value to our customers, we have partnered with several technology companies of like-mind and mission. We partnered with EarthDefine™ to support the launch of our canopy subscription service. We partnered with NatureQuant™ to integrate their groundbreaking technology for quantifying nature exposure and health benefits within TreePlotter software and our consulting services. Our Nearmap partnership allows us to use their high-accuracy, frequently updated imagery in TreePlotter applications. For more information please see [our website](#).



RESELLERS

We have software resellers around the globe. This network not only expands our reach but offers a continuous supply of feedback so our team and products can evolve with new ideas and business models from around the world.





PlanIT Geo™

developers of TreePlotter

PlanIT Geo™ is a global software and consulting company providing innovation in technology and planning for urban forestry, parks, and arboriculture.

 **Phone**
833.TreeMap

 **Website**
planitgeo.com

 **Email**
sales@planitgeo.com