



TreePlotterTM
by PlanIT Geo

URBAN FORESTRY SOFTWARE

TreePlotterTM

government | private | nonprofit | campus



TreePlotter SOFTWARE SUITE

TreePlotter is a best in class software suite made up of four applications. All of our software is map-centric and web-based, allowing access via any internet device and real-time data updates. Our platform allows API and WFS integrations, so you can use TreePlotter as a stand-alone system or integrate with existing technology.

The common thread of our software is high-powered functionality in an easy-to-use format. Save you and your staff time and money with increased efficiency, better communication, and smarter, data-driven decision-making.

Get to Know PLANIT GEO

PlanIT Geo™ is a global software and consulting company providing innovative planning and technology for urban forestry, parks, and arboriculture. Since 2012, our team of [ISA Certified Arborists](#), [GIS professionals](#), [planners](#), and software developers have led hundreds of projects, including urban tree canopy assessments, field-based tree inventories, and strategic plan development. Our [TreePlotter™ software](#) is often integrated with our consulting services and is used by thousands of urban foresters, arborists, park managers, and tree care companies around the world.

We see our purpose as adding “technology capacity” through data, information, and tools to any organization that wants to measure, manage, and protect green assets. Whether you represent a large [city](#), a small [tree care company](#), a corporate or university [campus](#), or a [nonprofit](#) organization, we’ve got you covered.

RESELLERS

We have [software resellers](#) around the globe. This network not only expands our reach but offers a continuous supply of feedback so our team and products can evolve with new ideas and business models from around the world.



Collect and manage tree data in real-time, anywhere, on any device



Grow your tree care business with online proposals, tree maps, and job scheduling



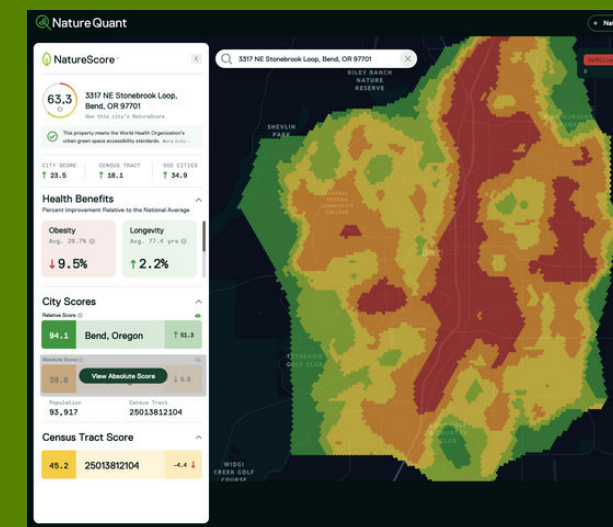
Map and inspect green assets and streamline work order management



View, plan, and grow your urban forest with canopy data analysis tools

PARTNERSHIPS

To deliver more value to our customers, we have partnered with several technology companies of like-mind and mission. We partnered with [EarthDefine™](#) to support the launch of our canopy subscription service. We partnered with [NatureQuant™](#) to integrate their groundbreaking technology for quantifying nature exposure and health benefits within TreePlotter software and our consulting services. Our [Nearmap](#) partnership allows us to use their high-accuracy, frequently updated imagery in TreePlotter applications. For more partner information please see our [website](#).



TreePlotter INVENTORY

Great for local and state governments, consulting arborists, nonprofits, and corporate and university campuses

Our flagship product, TreePlotter INVENTORY, is a comprehensive tree inventory and management software. It's a flexible tool for capturing tree and asset information in the field and managing that data with configurable dashboards, analysis, and reports. This web-based application allows for a quick rollout, with no additional device purchases necessary. Your unlimited users can use any smartphone or tablet to locate assets, assess conditions, store photos, and report findings in real-time.

Proactively manage risk and bolster outreach with complete work histories, public-facing maps, and customizable user access roles. Use the scalable product levels and industry specific functionalities to find the perfect fit for your organization.



TreePlotter
INVENTORY



MANAGE FROM ANYWHERE

Add, view, and update data from any location



DATA VISUALIZATION

Tell a powerful story with shareable, interactive maps



MOBILE

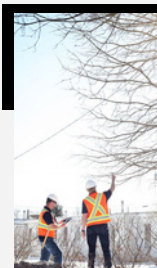
No GPS required, use on any device



5 STAR SUPPORT

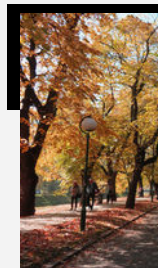
A support team with a proven record of excellence

Industry Specific FUNCTIONALITIES



Work Order Management

A centralized system for bids, work orders, service requests, and invoices



Eco Benefits

Globally supported i-Tree monetary and ecological benefits for every tree



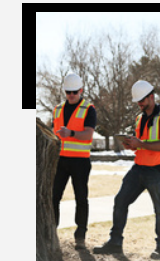
QTRA (UK and AU)

Electronic calculator for Quantified Tree Risk Assessment



Development Survey (UK)

Meet BS5837 standards for tree protection during construction



Advanced Risk Assessment

Electronic Level 2 ISA Advanced Risk Assessment form



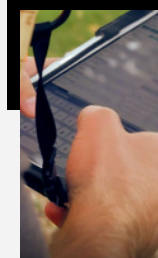
Reference Layer Importer

Add SHP or CAD files to view as a layer on your map



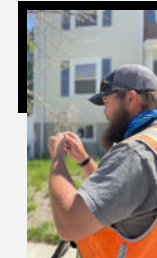
API and WFS Integrations

Integrate with an existing technology stack



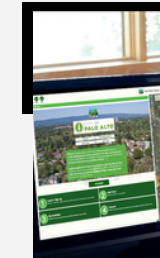
Offline Collector

Collect data with limited to no service in the field



Tree Appraisal

Efficiently calculate and report appraised tree value



Custom Landing Page

A unique landing page to inform and engage your audience

TreePlotter SOFTWARE



Visualize tree canopy and land cover data with TreePlotter CANOPY. Make data-driven decisions by identifying areas with low canopy and high planting potential. With CANOPY you can fine-tune your priorities based on a range of metrics, evaluate canopy goals, and measure projected impacts on ecosystem benefits.

CANOPY DATA SUBSCRIPTIONS

High-resolution, frequently updated tree canopy data is now accessible to communities of all sizes. For a low annual cost, communities can keep a precise pulse on their urban forest with 60-cm resolution land cover data that is updated every other year.

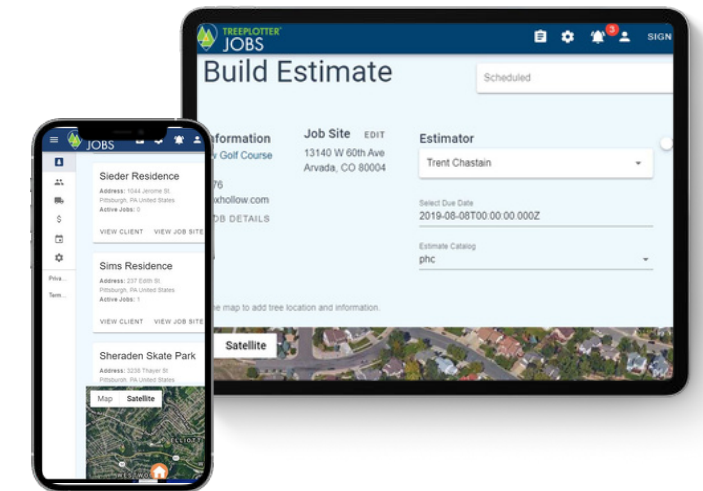
To launch this revolutionary model, we partnered with EarthDefine™. EarthDefine uses artificial intelligence and machine learning to transform earth sensor data into the most detailed U.S. tree canopy data available. Subscriptions can include data only or data + TreePlotter CANOPY.

Great for local, county, and state governments, and nonprofits



Get everyone on the same map with TreePlotter JOBS, our application designed specifically for tree care companies. Stand out from the competition with powerful features for mapping trees, creating modern, interactive estimates, and scheduling work orders. Provide clients with online access to view and approve professional, electronic proposals or take them on a 'virtual walk through' with easy-to-use tree maps corresponding to your proposed work.

Clients may not understand the full arboricultural value of your company's recommendations but they can easily gauge the quality of service being provided. JOBS helps your company leave a lasting impression so you win more bids.

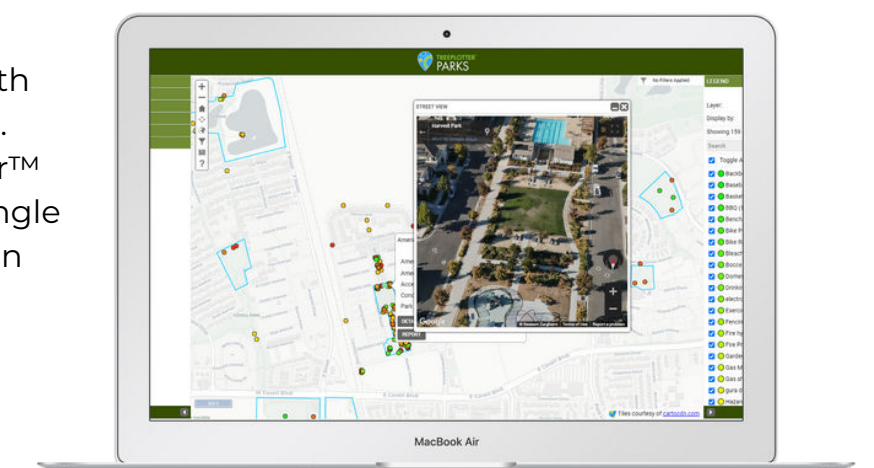


Great for tree care companies



Build a clear picture of your green assets faster than ever before! PARKS is a GIS-based, all-in-one software that gives you instant access to your tree, park, and grounds maintenance data. Map and document equipment and facilities with customizable data fields and dropdown menus for park boundaries, playgrounds, irrigation, and more.

Manage assets, costs, and maintenance schedules with powerful visualization tools. PARKS includes TreePlotter™ INVENTORY, providing a single system for any type of urban green assets.



Great for park departments, campuses, and enterprise clients



PlanIT Geo™

developers of TreePlotter

PlanIT Geo™ is a global software and consulting company providing innovation in technology and planning for urban forestry, parks, and arboriculture.

 **Phone**
833.TreeMap

 **Website**
planitgeo.com

 **Email**
sales@planitgeo.com